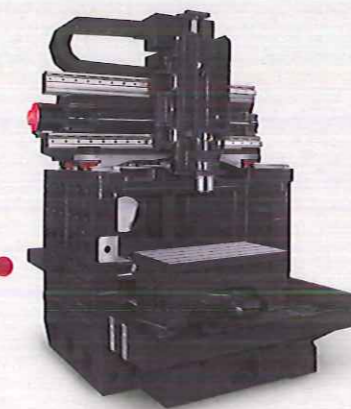
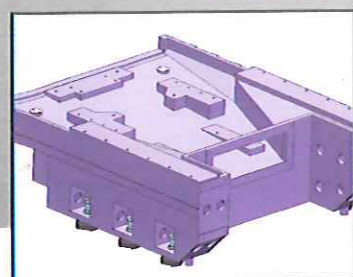
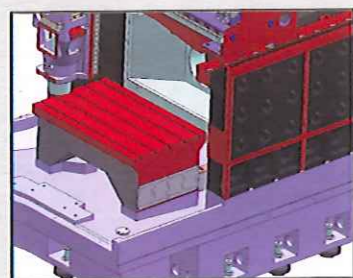
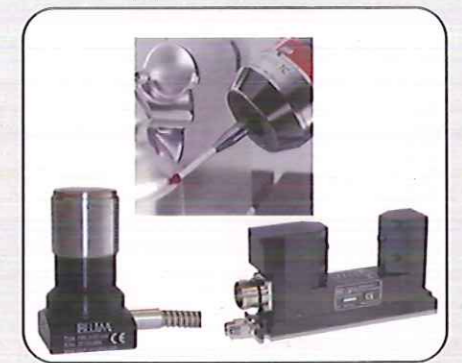


## Graphite machining center

- ▶ All castings are Heavily Ribbed box structure design, more lighter and increase higher structural rigidity.
- ▶ Step type saddle design, enhanced axial dynamic rigidity.
- ▶ Strong saddle and beams combine on superior surface, the effectively increase in cutting rigidity.
- ▶ GANTRY structure design, three-axis movement are on the top, to prevent graphite dust accumulation on Linear Roller Guides and Ball screw. This is perfectly suited for Mass production of graphite electrode.
- ▶ Workbench directly is fixed on the base, easy to collect dust and maintenance.
- ▶ Grease type lubrication for three axes, high dustproof coefficient ball screw and LM Guides.
- ▶ Fully enclosed sheet metal, that effectively protects operator and machine.
- ▶ Base slope design, that can absorb graphite direct into the dust bag to reduce accumulated graphite dust.
- ▶ The absorbing dusts inlet entrance at base side for easy to clean.



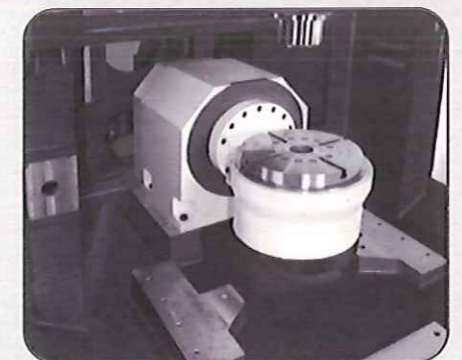
### Complete cutting support solution



Measuring System



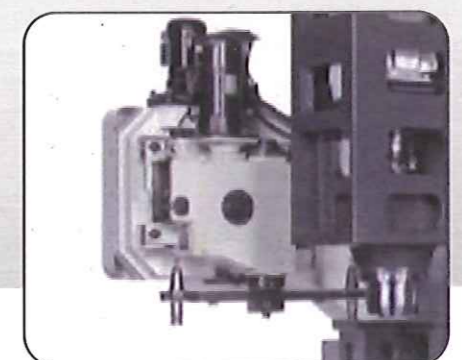
APC



4 · 5 axis cutting



High-level (μ-class) vacuuming equipment.

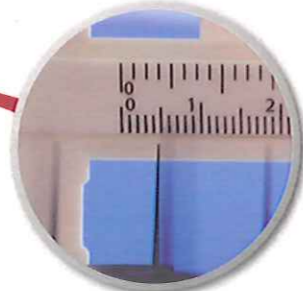
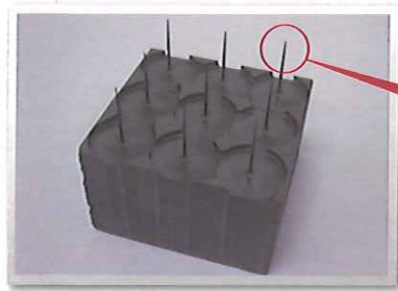


ATC



Specification	unit	i6	i9
<b>Table</b>			
XY Table dimension	mm	800x500	1100x500
Max. load on table	kg	500	400
Dist. between spindle nose & table surface	mm	150-550	150-550
Distance between columns	mm	1100	1300
<b>Travel</b>			
X axis	mm	600(option:700)	900
Y axis	mm	500	500
Z axis	mm	400	400
<b>Controller</b>			
Controller		FANUC 0iMF	FANUC 0iMF
<b>Feed</b>			
Rapid feed	m/min	48/48/48 option : 60/60/60	48/48/48 option : 60/60/60
Cutting feed rate	mm/min	1~10000 option : 20000	1~10000 option : 20000
<b>Spindle</b>			
Spindle power	kW	2.2/3.7	2.2/3.7
Spindle speed	rpm	12000//15000/20000	12000/15000/20000
Spindle taper		BBT-30 20K /50E	BBT-30 20K /50E
<b>ATC</b>			
Tool store capacity	pcs	3 (option:12/16)	3 (option:12/16)
Max. tool weight	kg	3	3
Max. tool weight	mm	200	200
Max. tool diameter	mm	70	70
<b>Machine Dimension</b>			
Machine weight (without option)	kg	5000	6000
Max. floor space (W*L*H)	mm	2600*4600*3000	3000*4600*3000
<b>Option</b>			
· HEIDENHAIN TNC620    · MITSUBISHI M80/M70 Series    · FANUC 0iMF/31i    · 12T/16T Armless    · 24T Arm type magazine · 30000rpm/50E/Built-in spindle    · 4,5 axis rotary table    · μ stage dust collector    · Linear scale    · APC			

\* specifications are subject to change without notice.



2023.02 DESIGNED BY JAPAN 880-4-2296-0020



*i*



**MAXXTRON**

**HIGH SPEED GRAPHITE MACHINING CENTER**

*i6, i9*



**MAXXTRON TECHNOLOGY CO., LTD.**

No.20, Ln.750, Wangfu St., Wangtian Vil., Dadu Dist.,  
Taichung City 432, Taiwan (R.O.C.).  
Tel: 886-4-26931373  
Fax: 886-4-26931298  
E-mail: sales@maxxtron.com.tw  
http://www.maxxtron.com.tw



www.maxxtron.com.tw



sales@maxxtron.com.tw

Agent